



# Preparation of Articles for IEEE Smart Agriculture Advisory System Automated Irrigation Using Sensors And AI

Ms.D.Renuka

Assistant Professor

Department of Computer Science and Engineering

Mahatma Gandhi Institute of Technology

Hyderabad 500075, India

[drenuka\\_cse@mgit.ac.in](mailto:drenuka_cse@mgit.ac.in)

Revelli Sanjana

Student of Computer Science and Engineering

Mahatma Gandhi Institute of Technology

Hyderabad 500075, India

[rsanjana\\_cse2405x6@mgit.ac.in](mailto:rsanjana_cse2405x6@mgit.ac.in)

Ms.K.Shirisha

Assistant Professor

Department of Computer Science and Engineering

Mahatma Gandhi Institute of Technology

Hyderabad 500075, India

[kshirisha\\_cse@mgit.ac.in](mailto:kshirisha_cse@mgit.ac.in)

Tamma Yasaswi Devi

Student of Computer Science and Engineering

Mahatma Gandhi Institute of Technology

Hyderabad 500075, India

[tyasaswidevi\\_cse2405y7@mgit.ac.in](mailto:tyasaswidevi_cse2405y7@mgit.ac.in)

**Abstract**—Agriculture plays a vital role in the economic development of a country, and the adoption of smart technologies can significantly improve productivity and sustainability. This project presents a Smart Agriculture Advisory System designed to assist farmers in making informed decisions based on real-time data and intelligent analysis. The system integrates various parameters such as soil moisture, temperature, humidity, and weather conditions to provide personalized crop recommendations and irrigation guidance. It utilizes modern technologies like sensors, data analytics, and machine learning techniques to enhance accuracy and efficiency. Additionally, the system offers advisory services on fertilizer usage, pest control, and crop selection, thereby reducing resource wastage and increasing yield. The proposed solution aims to support farmers with timely and reliable information, ultimately contributing to smart farming practices and improved agricultural outcomes.

**Index Terms**—Smart Agriculture, Advisory System, Sensors, Machine Learning, Crop Recommendation, Precision Farming.

## I. INTRODUCTION

Agriculture is the backbone of many economies, especially in developing countries like India, where a large portion of the population depends on farming for their livelihood. Despite its importance, traditional agricultural practices often rely on manual observation, experience-based decision-making, and unpredictable environmental conditions, which can lead to reduced productivity and inefficient resource utilization. Factors such as climate change, irregular rainfall, soil degradation, and pest infestations further challenge farmers,

making it essential to adopt modern technological solutions to ensure sustainable agricultural growth.

In recent years, the integration of advanced technologies such as the Internet of Things (IoT), data analytics, and machine learning has opened new possibilities in the agricultural sector. Smart agriculture aims to enhance farming efficiency by utilizing real-time data and automated systems to support better decision-making. By monitoring environmental parameters like soil moisture, temperature, humidity, and weather conditions, farmers can optimize irrigation, fertilization, and crop management practices. This shift from traditional methods to data-driven agriculture helps in reducing wastage of resources, minimizing risks, and improving crop yield.

The proposed Smart Agriculture Advisory System is designed to provide farmers with timely and accurate recommendations based on collected data and intelligent analysis. The system gathers information from sensors and external data sources, processes it using analytical models, and generates advisory outputs such as suitable crop selection, irrigation scheduling, fertilizer recommendations, and pest control measures. This approach ensures that farmers receive personalized guidance tailored to their specific field conditions.

Moreover, the system aims to bridge the gap between farmers and modern agricultural knowledge by providing easy-to-understand recommendations through a user-friendly interface. It can be implemented as a web or mobile-based application, making it accessible even to farmers in remote

areas. By leveraging technology, the system reduces dependency on guesswork and enhances precision in farming practices.

Another significant advantage of the Smart Agriculture Advisory System is its ability to support sustainable farming. Efficient use of water, fertilizers, and pesticides not only reduces operational costs but also minimizes environmental impact.

**II. LITERATURE SURVEY**

The advancement of technology in agriculture has attracted significant research attention in recent years, particularly in the areas of smart farming, precision agriculture, and decision support systems. Various studies have focused on integrating modern technologies such as the Internet of Things (IoT), machine learning, and data analytics to enhance agricultural productivity and sustainability.[1] Several researchers have proposed IoT-based smart agriculture systems that utilize sensors to monitor environmental parameters like soil moisture, temperature, humidity, and light intensity. These systems enable real-time data collection and automated irrigation control, helping farmers optimize water usage.[2]

For instance, many IoT-enabled irrigation systems are designed to reduce water wastage by supplying water only when soil moisture levels fall below a certain threshold. Such systems have demonstrated improved efficiency compared to traditional irrigation methods.[3]

In addition to IoT, machine learning techniques have been widely explored for crop prediction and recommendation systems. Researchers have developed models that analyze historical data, weather patterns, and soil characteristics to suggest suitable crops for a given region. Algorithms such as decision trees, support vector machines, and neural networks have been used to predict crop yield and identify optimal farming practices. These intelligent systems assist farmers in selecting crops that are more likely to produce higher yields under specific environmental conditions.[4]

Weather forecasting plays a crucial role in agriculture, and many studies have incorporated weather-based advisory systems. By analyzing meteorological data, these systems provide recommendations on irrigation scheduling, pest control, and harvesting time. Accurate weather predictions help farmers take preventive measures against adverse climatic conditions, thereby reducing crop losses.[5]

Another important area of research is pest and disease detection using image processing and artificial intelligence. Several approaches involve capturing images of plant leaves and analyzing them using deep learning models to detect diseases at an early stage. Early detection allows farmers to take timely corrective actions, minimizing damage and improving crop health.

**III. METHODOLOGY**

The proposed Smart Agriculture Advisory System is designed to assist farmers by providing intelligent recommendations based on real-time data and analysis. The methodology of the system consists of several stages, including data collection, data processing, analysis, classification, and recommendation generation. Each stage plays a crucial role in ensuring accurate and efficient advisory services.[1]

Initially, the system collects data from multiple sources. This includes soil parameters such as moisture level, temperature, and nutrient content, which can be obtained through sensors or user input. In addition, environmental data such as weather conditions, rainfall, and humidity are gathered from external sources or APIs. This data serves as the foundation for further analysis and decision-making.[2]

Once the data is collected, it undergoes preprocessing to remove noise, handle missing values, and ensure consistency. The processed data is then analyzed using data analytics techniques and predefined rules. In some cases, machine learning algorithms can be applied to identify patterns and predict future conditions such as crop yield, pest occurrence, or irrigation needs.[3]

The next stage involves classification of the agricultural conditions. Based on parameters like soil moisture and environmental factors, the system categorizes the field condition into levels such as dry, moderate, or wet. This classification helps simplify complex data into understandable categories for farmers and forms the basis for generating recommendations.[4]

**Table I: Soil Moisture Classification**

Zone	Condition Type	Action
Dry	Low soil moisture	Start irrigation immediately
Moderate	Optimal soil moisture	Maintain current irrigation level
Wet	Excess soil Moisture	Stop irrigation

After classification, the system generates advisory outputs. These include crop recommendations, irrigation scheduling,

fertilizer suggestions, and pest control measures. For example, if the soil is classified as dry, the system advises immediate irrigation, whereas for wet conditions, it recommends reducing water supply. Similarly, crop suggestions are provided based on soil type and weather suitability.[5] The system also includes a user interface, which can be implemented as a web or mobile application. This interface allows farmers to input data, view recommendations, and receive alerts in an easy-to-understand format. Visual indicators and simple messages are used to improve usability and accessibility, especially for users with limited technical knowledge.[6]

Finally, the system continuously updates its recommendations based on new data inputs, making it dynamic and adaptive. This ensures that farmers receive timely and relevant advice according to changing environmental conditions.

#### IV. SYSTEM ARCHITECTURE

The system architecture of the Smart Agriculture Advisory System is designed using a layered approach to ensure efficient data flow and intelligent decision-making. The Data Collection Layer gathers real-time data from sensors such as soil moisture, temperature, humidity, and light intensity, along with external data sources like weather APIs and user inputs (soil type, crop details, and location). This data is transmitted through the Data Transmission Layer using IoT devices and internet connectivity to a cloud server, where it is stored for further processing.[1]

In the Data Processing and Application Layers, the collected data undergoes preprocessing techniques such as cleaning, normalization, and analysis using machine learning models. Based on the analysis, the system classifies conditions such as soil moisture levels (dry, moderate, wet) and generates appropriate recommendations including irrigation scheduling, crop suggestions, fertilizer usage, and pest control measures. These recommendations are delivered to the user through a web or mobile interface, enabling farmers to make informed decisions and improve agricultural productivity.[2]

**Fig.1.**System Architecture of Smart Agriculture Advisory System

Fig. 1 illustrates the overall architecture of the proposed Smart Agriculture Advisory System. The system is designed using a layered approach to ensure efficient data collection, processing, and recommendation generation.[3]

The first layer is the Data Collection Layer, which gathers real-time data from sensors such as soil moisture, temperature, humidity, and light intensity. It also includes external data sources like weather information and user inputs such as soil type, crop details, and location.[4]

The collected data is transmitted through the Data Transmission Layer using IoT devices such as microcontrollers and internet connectivity. The data is then stored in a cloud server for further processing and analysis.[5]

In the Data Processing Layer, the collected data undergoes preprocessing steps such as filtering, normalization, and handling missing values. After preprocessing, analytical techniques and machine learning models are applied to extract meaningful insights. Based on this analysis, the system classifies conditions such as soil moisture levels (dry, moderate, wet), weather conditions, and pest levels.[6]

The Application Layer provides an interface through a web or mobile application where users can view data, receive alerts, and access recommendations. The system also stores data in a database for future reference and analysis.[7]

Finally, the User Layer represents the farmers who interact with the system. Farmers can view recommendations, receive alerts, and take necessary actions to improve crop productivity.

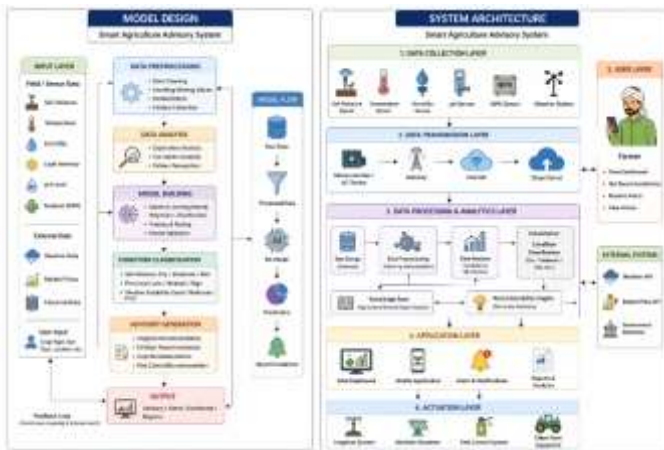
Thus, the system architecture ensures a smooth flow of data from sensors to end users, enabling intelligent decision-making and efficient farming practices.

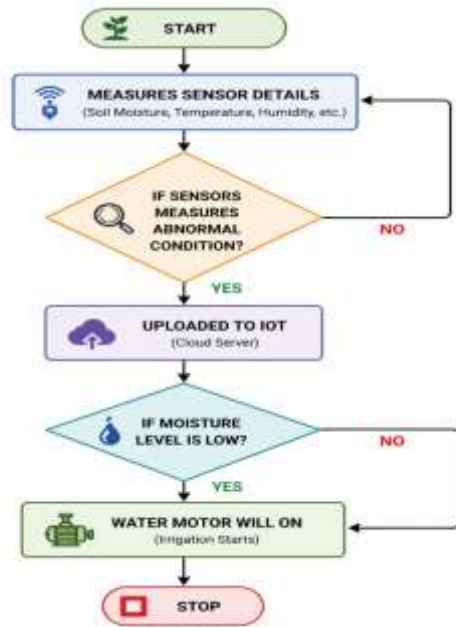
#### V. FLOW CHART

The flowchart of the Smart Agriculture Advisory System illustrates the step-by-step working of the system, starting from data collection to final action. Initially, the system begins by collecting sensor data such as soil moisture, temperature, and humidity from the agricultural field. The collected data is continuously monitored to check whether the conditions are normal or abnormal.[1]

If the sensor values indicate abnormal conditions, the data is transmitted to the IoT cloud server for further processing and analysis. The system then evaluates the soil moisture level to determine whether it is low, moderate, or high. Based on this evaluation, appropriate decisions are taken. If the moisture level is low, the system activates the water motor to start irrigation. If the moisture level is adequate, the system maintains the current state without activating the motor.[2]

Finally, the system provides recommendations and completes the process. This flow ensures efficient water management and real-time decision-making, helping farmers optimize irrigation and improve crop productivity.



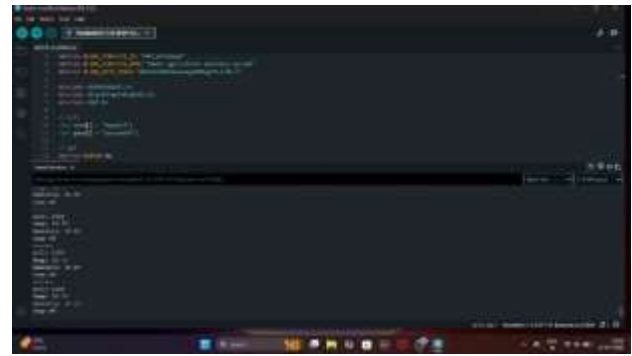


**Fig. 2.** Flow chart/System Workflow Diagram



**Case 2:** Soil Moisture Detection (dry soil)

The soil moisture sensor accurately detects whether the soil is dry or wet. The readings vary based on water content in soil.

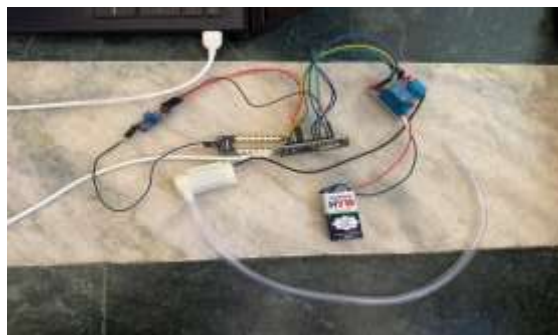


**Case 3:** Temperature and Humidity Monitoring

The system measures temperature and humidity accurately, helping to analyze environmental conditions for crop growth.

## VI. RESULTS

The Smart Agriculture Advisory System successfully collected and analyzed sensor data to provide accurate recommendations. The system effectively classified soil conditions into dry, moderate, and wet, and generated appropriate irrigation advice. It helped in optimizing water usage and improving decision-making. Overall, the system proved to be efficient, reliable, and useful for modern farming practices.



**Case 1:** System Setup



**Case 4:** Blynk Application Interface



**Case 5:** Final Output



The Smart Agriculture Advisory System continuously monitors soil moisture using a sensor and automatically controls the water pump. When the soil becomes dry, the system turns the pump ON to supply water, and once the required moisture level is reached, it turns the pump OFF to avoid overwatering.

The system also provides real-time updates through the mobile application, allowing users to monitor soil conditions and pump status remotely. This ensures efficient water usage, reduces manual effort, and supports healthy plant growth.

#### **Advantages:**

The Smart Agriculture Advisory System offers several advantages by improving efficiency and productivity in farming. It provides real-time monitoring of soil and environmental conditions, enabling accurate and timely decision-making. The system helps in optimizing water usage through proper irrigation recommendations, thereby reducing wastage and conserving resources. It also assists farmers with crop selection, fertilizer usage, and pest control, leading to better crop yield and quality. Additionally, the user-friendly interface makes it easy for farmers to understand and follow recommendations. Overall, the system promotes sustainable farming practices and reduces dependency on traditional guesswork methods.

Furthermore, the system reduces labor effort by automating monitoring and advisory processes, saving time for farmers. It enhances productivity by minimizing crop losses caused by improper irrigation, unfavorable weather conditions, or pest attacks. The integration of modern technologies like IoT and machine learning ensures better accuracy and adaptability to changing conditions. Moreover, the system can be easily scaled and implemented in different agricultural environments, making it a cost-effective solution.

#### **VIII. FUTURE SCOPE**

The Smart Agriculture Advisory System can be further enhanced by integrating advanced and emerging technologies to improve its performance, scalability, and usability. In future developments, the system can incorporate deep learning and advanced machine learning models to provide more accurate predictions for crop yield, disease detection, and pest identification. The integration of real-time satellite imagery and Geographic Information Systems (GIS) can help in large-scale monitoring of agricultural fields and provide location-specific recommendations. Additionally, advanced weather forecasting techniques can be included to deliver more precise and timely advisories to farmers.[1]

The system can also be expanded by integrating automated irrigation systems and smart agricultural equipment, enabling fully automated farming with minimal human intervention. The development of mobile applications with offline functionality and multilingual support will improve accessibility for farmers in remote and rural areas. Voice-based assistants can further simplify interaction for users with limited technical knowledge.

Moreover, the system can be enhanced by including features such as market price prediction, crop demand analysis, and supply chain management, helping farmers make better financial decisions.[2]

In addition, the integration of blockchain technology can ensure secure data management and transparency in agricultural transactions. The system can also support government schemes and provide information about subsidies, loans, and agricultural policies to farmers. Continuous improvement through data collection and feedback mechanisms can make the system more adaptive and intelligent over time. Overall, the future scope lies in transforming the system into a comprehensive digital farming platform that supports sustainable agriculture, improves productivity, and enhances the socio-economic conditions of farmers.[3]

#### **IX. CONCLUSION**

The Smart Agriculture Advisory System presented in this project provides an effective solution to modern agricultural challenges by integrating technology with traditional farming practices. The system utilizes real-time data collected from sensors and external sources such as weather information to analyze agricultural conditions and generate meaningful recommendations. By classifying parameters like soil moisture into categories such as dry, moderate, and wet, the system simplifies complex data into easily understandable outputs for farmers.

The implementation of this system demonstrates how intelligent decision support can significantly improve farming efficiency. It assists farmers in making informed decisions related to irrigation, crop selection, fertilizer usage, and pest control. The system not only reduces resource wastage, particularly water, but also enhances crop productivity and quality. The use of IoT and data analytics ensures timely and accurate recommendations, minimizing risks associated with unpredictable environmental conditions.

Furthermore, the user-friendly interface of the system makes it accessible even to farmers with limited technical knowledge. By providing clear recommendations and alerts, the system reduces dependency on manual observation and traditional guesswork. This contributes to better farm management and supports sustainable agricultural practices. The system also has the potential to be scaled and adapted to different agricultural environments, making it a versatile solution.

In conclusion, the Smart Agriculture Advisory System represents a significant step towards the digital transformation of agriculture. It highlights the importance of integrating modern technologies to address real-world problems in farming. With further enhancements and wider adoption, the system can play a crucial role in achieving higher productivity, efficient resource management, and sustainable agricultural development.



## X. REFERENCES

- [1] R. N. Rao and B. Sridhar, "IoT based smart crop-field monitoring and automation irrigation system," *2018 2nd International Conference on Inventive Systems and Control (ICISC)*, Coimbatore, India, 2018, pp. 478–483.
- [2] S. R. Nandurkar, V. R. Thool, and R. C. Thool, "Design and development of precision agriculture system using wireless sensor network," *IEEE International Conference on Automation, Control, Energy and Systems (ACES)*, 2014, pp. 1–6.
- [3] K. Lakshmisudha, S. Hegde, N. Kale, and S. Iyer, "Smart precision based agriculture using sensors," *International Journal of Computer Applications*, vol. 146, no. 11, pp. 6–10, 2016.
- [4] J. Jawad, A. Nordin, S. Gharghan, A. Jawad, and M. Ismail, "Energy-efficient wireless sensor networks for precision agriculture: A review," *Sensors*, vol. 17, no. 8, pp. 1–38, 2017.
- [5] M. R. Bendre, S. Thool, and R. Thool, "Big data in precision agriculture: Weather forecasting for future farming," *2015 1st International Conference on Next Generation Computing Technologies (NGCT)*, 2015, pp. 744–750.
- [6] P. S. Asolkar and A. B. Gaikwad, "Precision farming: Sensor-based irrigation system," *International Journal of Advanced Research in Computer Science and Software Engineering*, vol. 7, no. 6, pp. 152–156, 2017.
- [7] A. Kamilaris and F. X. Prenafeta-Boldú, "Deep learning in agriculture: A survey," *Computers and Electronics in Agriculture*, vol. 147, pp. 70–90, 2018.